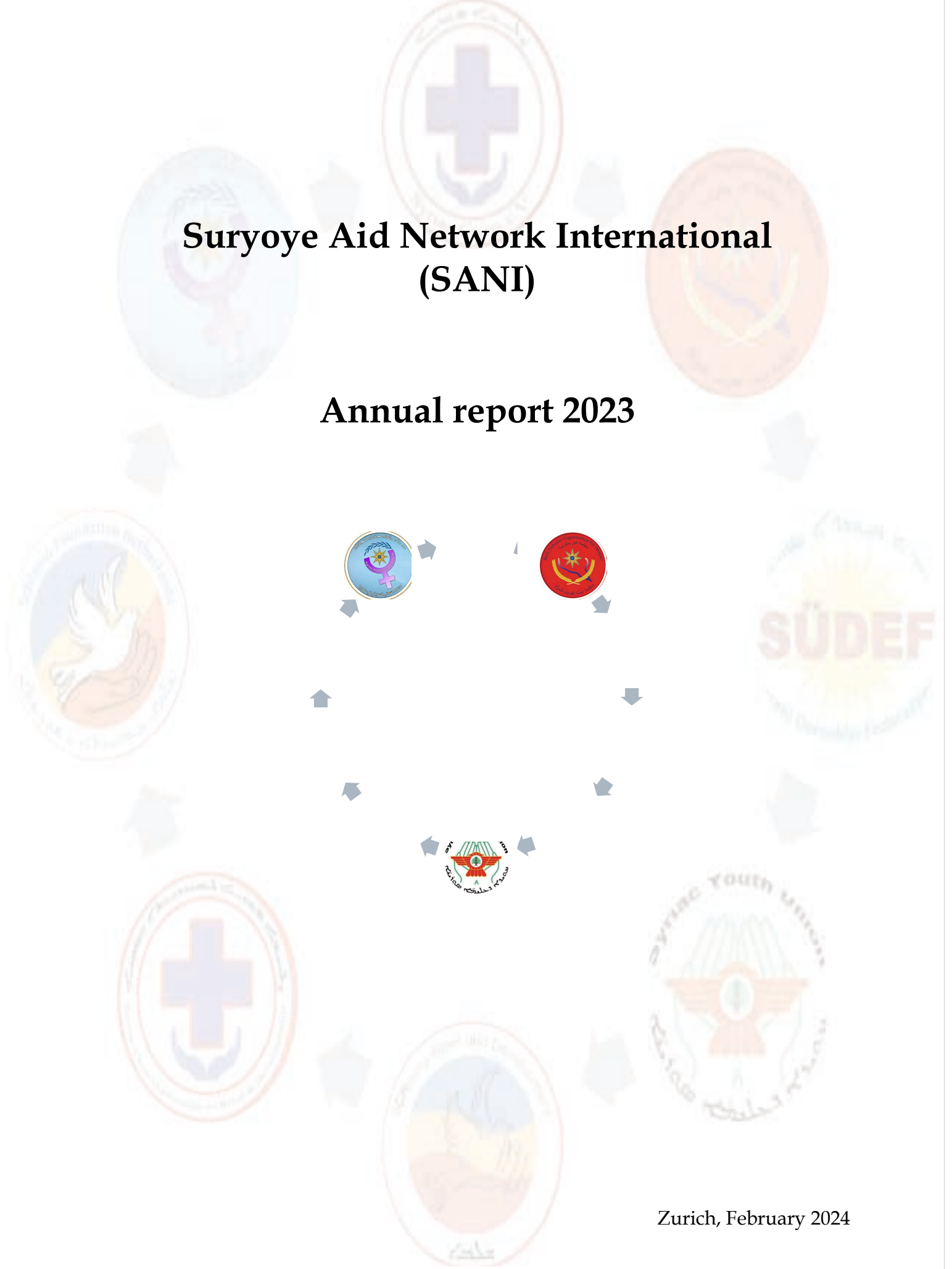


Suryoye Aid Network International (SANI)

Annual report 2023

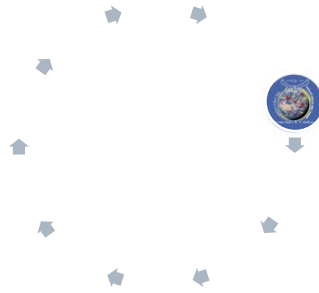


Zurich, February 2024



INDEX

FOREWORD	3
WHO ARE WE?.....	4
TÜRKIYE	5
LEBANON	9
SYRIA	10
IRAQ.....	19
CHILDREN.....	26



Foreword

Dear reader,

It is with pride and gratitude that we present the first joint annual report of the Suryoye Aid Network International (SANI). While cooperation between the various Suryoye aid organizations has existed for years, it has now been decided to also go public as a network.

As befits a network, there is no hierarchical structure between the organizations. However, a consultation and working structure is in place. Each organization has its own spokesperson within the network, represented in the consortium. There is one general coordinator who has final responsibility for all interim and final reports. She/he is assisted by a finance and logistics coordinator, a monitoring and evaluation coordinator and an office manager.

Because the network works extensively with international donors, the coordinators are based in Europe and are fluent in at least English in addition to their native language.

SANI's target population are the Syriac-Assyrian- Chaldean Christians (Suryoye), the indigenous people of the homelands. The homelands of Suryoye are defined as being in Syria, Iraq, southern Türkiye and Lebanon, the area traditionally known as Mesopotamia.

The Suryoye have been victims of genocide, persecution, exclusion, and discrimination for centuries, but especially since the early 20th century.

The most horrific was the genocide known as Sayfo (Sword) in 1915. In addition, the Treaty of Lausanne, which did not name or recognize Suryoye as an indigenous people, led to widespread confiscation of land and homes. As Christians in a predominantly Muslim-oriented area, this indigenous minority group faces an uphill struggle. To this day, Suryoye face attacks on their spiritual and physical existence.

SANI's first commitment is to stop the exodus of Christianity from the Middle East. SANI wants to help the Suryoye to live **IN** their homelands. Preventing people from having to leave homelands is SANI's top priority and all projects are aimed at this. In this annual report, we would like to give you an idea of what we are doing.



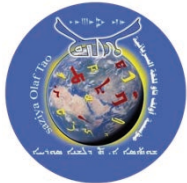
Who are we?



Syriac Cross Organization for Relief and Development (SCO), established in 2013, based in Al-Malikiyah (Derik), registered in AANES, Northeast Syria, leading partner within the network when it comes to projects in Syria.



Syriac Women Union, established in 2013 and based in al-Hassake, an executive partner of SCO, focuses on defending, enforcing and expanding the women's rights in Syria.



Olaf Taw established in 2015 and based in al-Qamishli, is an educational organization and has a special focus on the Aramaic language.



Beth Nahrin Organization for Women (BNOW), established in 2001 and based in Baghdede (Qaraqosh), is the lead partner within the network for projects in Iraq. In addition to its primary goal of empowering women, BNOW focuses on livelihood and educational projects.



Bahro Studio, established in 2022 and based in Ainkawa/Erbil, focuses on strengthening the unique ethno-religious culture of Aramaic-speaking Christians through Aramaic broadcasting.



Süryani Dernekler Federasyonu (SÜDEF), established in 2019 and based in Tur Abdin/Mardin (south-east Türkiye), is the lead partner within the network when it comes to projects in Türkiye.



Syriac Youth Union (SYU), established in 2009 in Beirut, is the lead partner within the network for projects in Lebanon.



SCHlomo for Relief and Development, established in 2015 and based in Zurich. In addition to the role of obtaining projects for SANI, SCHlomo focuses on arranging godparenthoods between Suryoye in Europe and in the homelands.



Syriac Cross Sweden (established in 2015 in Södertälje/Stockholm), Syriac Cross e.V. (established in 2016 in Hamburg, Germany) and L'Organisation de la Croix Syriaque Belgium (established in 2017 in Liege) fulfill their role of obtaining projects for SANI and focus on arranging Godparenthoods between Suryoye in Europe and in the homelands.



Stichting Schlomo, established in 2019 and based in Hengelo. In addition to the role of obtaining projects for SANI, SCHlomo focuses on arranging godparenthoods between Suryoye in Europe and in the homelands.

Türkiye

Making a living in Türkiye is not easy for Christians in general and the Suryoye in particular. As SANI, we focus on a small but close-knit Suryoye community in Tur Abdin (Mountain of the Servants of God), and since the February 6th earthquake, we have been serving the Christians of Hatay province with emergency relief, reconstruction, and livelihood projects.

Due to various demotivating policies from the Turkish government, it is difficult for non-Muslim minorities (such as Suryoye) to build and sustain their livelihood security. The Suryoye, who have managed to survive in Southeast Türkiye are coping with all these challenges.

Knowing the daily challenges that Suryoye have faced in this area before, but at least since the "Year of the Sword" 1915, the news on February 6th, 2023, that this very area of Türkiye had been hit by an earthquake measuring 7.7 on the Richter scale made the news all the more grievous.

As SANI, we immediately joined forces and were able to send funds towards to our lead partner SÜDEF at very short notice. SÜDEF was able to purchase food, hygiene items and clothing and arrived on February 9th, 2023, in the Antakya region to help the victims.



the first days of February, we distributed:

- 500** sets of clothing for women and men
- 500** sets of winter boots
- 1000** winter jackets for children, women and men
- 1000** mattresses
- 2000** blankets

In the weeks that followed, we made several trips to the earthquake zone with trucks full of emergency supplies. Besides Samandag, we also reached Antakya, Iskenderun, Adiyaman, Altinözü and Arsuz. The latter times, special attention was given to the children, who had been living for weeks in a tent, a barn or a shelter. In addition to the fear of another earthquake, the horror of seeing their homes destroyed and the fear in their parents' eyes, boredom simply sets in: no school, little room to move and chaos everywhere, let a child just be a child!



In February and March 2023, SANI distributed, throughout the entire area affected by the earthquake, a total of:

- 1,200** food parcels
- 1,200** hygiene kits
- 500** packages diapers and sanitary pads
- 500** toys



Mid-winter and people sleep in shelters, (homemade) tents, sheds, their cars or even in the open air. As SANI, we always focus on the livelihood security of the Suryoye in the homelands. One of the pillars of livelihood security is shelter. As SANI, we offered our logistical and financial support to an organization that specializes in building tiny houses quickly. What is unique about this project is that the people were taught how to build the tiny houses. After all, livelihood security also requires self-reliance. SANI was present at the construction of the first tiny house. It was heartwarming to see how the whole family was able to help build their new home. With the experience they gained, they were able to help other families with their tiny house. SANI mediated, guided and co-financed the construction of 3 tiny houses, after which the families were able to support each other with their new homes.



SANI was given the opportunity to take on a project involving container homes. Prefabricated containers, fully furnished with plumbing and countertops. Container homes are weatherproof and can be used as permanent housing. SANI completed a project of 10 container homes in Samandag.

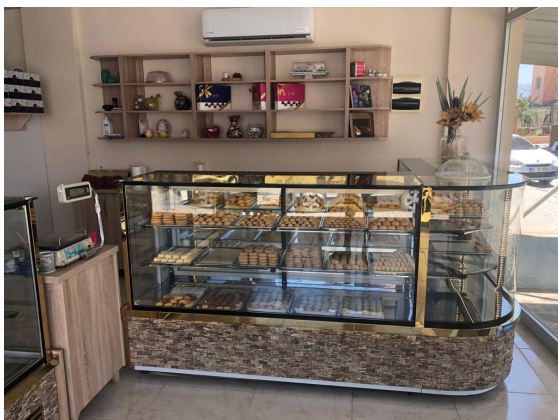




The great advantage of containers is that they can be furnished as desired. SANI is always focuses on the livelihood of the people in the homelands. For this reason, we have converted a container into a hair salon. Not only a direct source of income (and therefore an important aspect of livelihood security) for the hairdresser, but also a psychosocial project. Living in dust and rubble for weeks on end, relying on donations for food and water, and having nothing to do can lead to low self-esteem. What could be better than getting a haircut, being pampered and feeling good about yourself again? That is why SANI chose a hair salon as its first livelihood project in the affected area.



In addition, SANI was able to quickly rebuild Sibel's pastry and bakery business after her old shop became inaccessible. Another business that has been set up in a container is the Eliz's Grocery Store. Launching new livelihood projects in Turkey. Enabling people to use their talents and experience to earn a stable income is one of SANI's priorities.



housing containers
livelihood businesses
direct beneficiaries



Lebanon

The uncertain political and disastrous economic situation of Lebanon affects the citizens of Lebanon. People struggle daily to keep their heads above water.

SANI realizes that it is essential for the survival of Christianity throughout the Middle East that Christians do not flee Lebanon. SANI is trying to help alleviate the daily concerns of food and drink by distributing food vouchers. In addition, the medical situation is dire for those in need of medicine, treatment or surgery. SANI was able to distribute 100 medicine vouchers and helped two people with life-saving surgeries.



As SANI, we have taken on a special case in Lebanon. 9-year-old Leoni is mentally handicapped. Before COVID, she was able to attend a special school. She really blossomed there and was very eager to learn. Unfortunately, all schools were closed because of COVID. Now the schools are open again, but with over 600% inflation in Lebanon, few can afford to send their children to a special school. Through a crowdfunding campaign, SANI was able to secure a place for Leoni for the upcoming school year.



500 food vouchers

100 vouchers for medicines

1 very happy lady sent to school



Syria

According to UNHR since 2011, more than 14 million Syrians have been forced to flee their homes in search of safety. More than 6.8 million Syrians remain internally displaced in their own country where 70 percent of the population needs humanitarian assistance and 90 percent of the population live below the poverty line.

Since the earthquake, people in Syria suffer even more from the already very difficult financial situation. The high exchange rate already made it impossible to cover vital expenses. During the earthquake, people just ran out of the house and nobody even thought of taking anything with them. After the shock of the earthquake was over, the victims had to gather themselves and first, they looked for shelter, food and their needed medications. Syrian survivors in general have received less assistance than Turkey and given the regime in Syria it has been harder for western non-profits to send aid into the affected areas.

Syriac Cross Organization for Relief and Development (SCO) is SANI's lead partner when it comes in Syria. SCO identified the two governorates of Aleppo and Lattakia based on the damage caused by the earthquake. SCO quickly provided relief and life-sustaining aid within short time, such as food, water and medicine, as well as fuel for heaters and generators.



In February and March 2023, SANI distributed, in the governorates of Aleppo and Lattakia, a total of:

- 1,500** food parcels
- 1,500** hygiene kits
- 1,400** water Six-Pack
- 2.165** families (9287 beneficiaries)



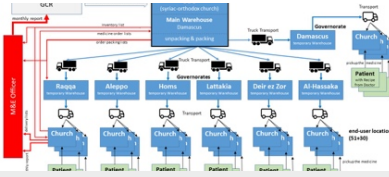
At SANI, we always focus on the long term, and after the earthquake, we were not just planning for the first few weeks or months. People's homes and livelihoods were destroyed. They desperately want to stay, but without help, how can they rebuild the businesses they had before the earthquake?

SANI was able to start 4 livelihood businesses: a photography business, an aluminum shop, a mobile shop, and a grocery store.



After the shock of the earthquake, many survivors searched for shelter and food, but they also lost their medicines in the rubble and lacked the financial resources to get the medicines they needed. As a result, churches and local partners are increasingly being asked for medical assistance and medicines. Syriac Cross' assessment on the ground showed that people were in desperate need of medicines, but the prices of medicines had risen, and due to logistical and political challenges, many medicines had not reached the affected areas or were no longer available locally. When SANI was given the opportunity to partner with a medicine distribution project, it immediately took on the logistical challenge.

This resulted in the distribution of medicines to 7 governorates in Syria: Lattakia, Homs, Damascus, Aleppo, Al-Hassaka, Deir ez Zor and Raqqa. From the warehouses in each governorate, the medicines were further distributed to 33 distribution points, including churches, medical facilities and centers. In this way, SANI was able to distribute 24 pallets of medicines, 981,526 packs, to 12,589 families (28,527 beneficiaries).



efforts

24 pallets of medicines

981.526 packages

7 governorates

33 distribution points

10,500 families (20,000 beneficiaries)

In 2023 SANI opened the Syriac Cross Medical Clinic in al-Qahtaniyah in Northeast Syria. The medical clinic is fully equipped with internal medicine, pediatrics, and gynecology departments. It provides residents with comprehensive medical care from X-ray and laboratory analyses to a full-service pharmacy. The medical clinic serves up to 25 - 30 patients a day. Since June 2023, the clinic team has treated 4,252 patients, among them 765 emergencies. According to capacity, these emergencies were treated on site or transported by ambulance to a hospital in al-Qamishli or al-Hassaka.

The presence of a well-equipped ambulance is an integral part of the Syriac Cross Medical Clinic. With the ambulance, the Syriac Cross Medical Clinic has become a vital medical facility for the region. A number of other organizations serving the local population have benefited from the ambulance. Without this service, many would not have survived.

The Syriac Cross Medical Clinic has already impacted the local community, providing lifesaving medical care to thousands in need. The clinic provides access for thousands who previously would not have been able to receive emergency treatment in time. The clinic helps to alleviate the problems of the region's economically disadvantaged population. Thus, the clinic provides vital healthcare support to vulnerable communities.



Impact since June 2023:

25-30 patients a day

765 emergencies

1,252 patients in total

Since 2020, Syriac Cross Organization has established a Family Center. A completely renovated building in Qamishli that serves as a place of gathering and togetherness. The Family Center offers various trainings, deepening meetings, psychosocial courses and just playing time. It is a place where especially Suryoye women can come together to learn more about their past as a people, their language



and traditions, and to strengthen each other in coping with the present. Below is an overview of the trainings and meetings offered at the Family Center.

Courses 2023	1st quarter	2nd quarter	2nd quarter	4th quarter
English	xxx	xx	xxx	x
Music	xxx	xxx	xxx	xx
Psychological assistance	x	x	x	x
Playtime	xxx	xxx	xxx	xxx
Drawing	xxx	xxx	xxx	xx
Sport				xx
Drama class				x
Cooking		xx	x	x
Health Session	x		x	
Sewing	xxx	xxx	xx	xx
First Aid	xxx	xxx	xx	xxx
Nursing	xxx	xxx	xxx	x
Computer	xxx	xxx	xxx	xx
Awareness meeting	x	x	x	x
Excursion		x		
(Christian) Holidays		x		x
Psychological support Earthquake		x	x	
Mother's Day Celebration			x	
Summer holiday party				x

children	adults	children+adults
----------	--------	-----------------



Another project that helps Suryoye families maintain a livelihood in their homeland is the Training Center for Women in Al-Hassaka. The economic situation has worsened since the fall of the Syrian pound. In some families, the father, the breadwinner, has died, and in others his income is not enough, so women are increasingly looking for work to help their families. This makes it even more important for women and young girls, who are often already at a disadvantage in the labor market, to make the most of what little opportunity they have to earn an income.

The focus of the Training Center is on (adolescent) women, who were chosen in an inclusive way to ensure that women of a variety of ages and socio-economic status are represented in the groups.



The Training Center has designed a variety of services to help young women develop their authentic selves, build growth-fostering relationships and live empowered lives, personally and professionally. Individual, couple, group training and workshops provide ways to grow and gain skills. In addition, to the trainings offered, particular attention has been paid to creating an atmosphere in which the transmission of knowledge, language, culture and tradition within the different generations and backgrounds could take place in a natural, informal manner.

The trainings offered by the Training Center focused on building self-confidence (i.e., Make-up/ cosmetics training, hairstylist), empowerment leading up to work (computer course), self-providing technics (designing and making clothes), small business opportunities (hairstylist, tailor). By working in small groups, there was also be a focus on enhancing social skills. The Training Center ensured access to a safe space for (adolescent) women to follow these training courses:

- First Aid
- Make-up/ cosmetic hairstyling course
- Tailor course
- Computer course (Word, Excel, i. a.)



12 courses
10 staff/teachers employed
100 participants

An ongoing project of SANI is the kindergartens. Under the supervision and implementation of the Syrian Women Union (SWU), there are 5 kindergartens operating in the Northeast of Syria.



A kindergarten is important for both the children and their mothers. Mothers are given the opportunity to go to work while their children are being educated in kindergarten. This gives the women a chance to improve the financial situation of their families and the children a chance to play, sing and learn with like-minded children.

Teachers who understand their psychology and situation supervise the children. The children, aged 3-6, are taught in 3 languages: Aramaic, Arabic and English. Teaching materials are also available in all three languages. With this approach, SWU wants to set an example for the community in terms of inclusiveness, gender equality, and interfaith and interethnic cooperation.

ge 1	Westa - al-Qamishli	45	3
al		280	17



5 kindergarten
17 teachers employed
280 children educated

Every human being has the right to learn his or her mother tongue. Every people or ethnic group has this right, guaranteed by international conventions. The Suryoye are among the few peoples in the world who are deprived of this simple and obvious right. The Olaf Taw educational institution in the northeastern region of Syria, which



specializes in the Syriac-Aramaic language and has developed a modern curriculum. This curriculum in Syriac-Aramaic is now being used by Suryoye students.

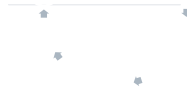


Olaf Taw also produces educational materials in the form of cartoon videos for children, which will reach a broad mass. Most important is the preservation of the sacred and historic Aramaic language. Children in the Middle East and the Diaspora will be able to watch and listen to animations and cartoons in their native language. So far, two children's clips with music have been produced (<https://fb.watch/f79XA6Ctfs/> and <https://fb.watch/f79ZtszfNi/>).

Al-Hassaka governorate has a decades-long history of agriculture and was known as the breadbasket of Syria, exporting wheat and barley to all of Syria. Since the outbreak of the civil war in March 2011, various sanctions imposed on Syria have negatively affected employment opportunities and livelihoods. Due to the dire economic situation and the fact that many factories and companies have closed down due to lack of raw materials or inability to sell their products, this has resulted in the displacement of workers and increased the unemployment rate in Syria.

SANI began providing farmers in Al-Hassaka governorate with seeds, fertilizer, drainage pipes, branch irrigation pipes, valves, taps, plugs and seed bags on a regular basis throughout the year. By cultivating the land, they will also provide the surrounding region with food and nutrition to sustain their families, livelihoods and communities. Proceeds from the land will contribute to the region's goal of self-sufficiency.





The constant blockading of the northeast border and the fluctuating exchange rate are making survival difficult. Turkey's ongoing drone attacks on the al-Hassaka governorate have destroyed all infrastructure, leaving people without access to water, electricity and other essential services.

As SANI, we distribute food parcels and hygiene kits to needy families in the region several times a year.



In 2023, SANI provided immediate relief aid to communities affected by the ongoing war, displacement, and Turkish aggression in North East Syria.

Relief Aid in North East Syria:

600 Food parcels (3,321 beneficiaries)

600 Hygiene kits (3,108 beneficiaries)

Since 2016, SANI has been facilitating psychosocial Art-Therapy for children and adolescents in several cities across the Nineveh Plain. Art-Therapy is a trauma program designed to address the non-verbal core of traumatic memories in order to improve children's resilience and mental health.

Through the previous Art-Therapy editions, the project has gained the necessary notoriety in the whole region of Nineveh Plains, and we find that when registration is set up, parents are eager to register their children. This makes us both happy and sad.



Sad because the need is apparently so high. From the reports of the psychologists involved, we read that many teenagers are walking around with suicidal thoughts, that many younger children are isolating themselves, that many children have difficulty making friends and struggle with low self-esteem. In this year's series of Art-Therapy, we have focused on creating intercultural and interfaith groups.

The Beth Nahrain Organization for Woman (BNOW) conducted the implementation of this project with internal and external staff. The project was under the supervision of competent teachers in adolescents' psychology as well as a certified drawing teacher.

2023	1 st round	2 nd round	Total
Staff *	12	12	
Baghdede	32	25	67
Bashika	27		27
Shaqoli	28		28
Margi Mara		25	25
Xazna		25	25
Total participants			160

**4 staff members were present per group, a certified psychologist, a drawing teacher and 2 assistants with basic psychosocial knowledge. At the different locations, we tried as much as possible to hire staff from the respective location, also considering ethnic background (Suryoye, Yazidi, etc.)*

Participants go through a lot of emotions during the three-month course. To give them a day of carefree fun, there is room for a field trip in each Art Therapy. Participants regularly take a bus to Mor Mattai, where they can briefly experience the ancient tradition, they are a part of. But sometimes the participants go to a playground or the swimming pool. They just relax with each other and make new friends.



Art Therapy is hard work. Working on your self-esteem, on your self-image and on your acceptance boundaries. As SANI, we also want to acknowledge and appreciate this hard work. Every Art Therapy group therefore concludes with an exhibition ceremony. This exhibition ceremony is attended not only by the parents of the participants, but also by notables from the municipality in which the participants live. In doing so, the community also indicates the value and dignity of the participants. During the ceremony, participants receive a certificate of participation and a children's Bible in the Arabic language. Afterwards, the children show their created works of art to the guests. This often reveals upsetting stories about the processes the participants went through.



Art Therapy gave employment to:

24 staff members
and provided trauma relief to
160 participants



In the early hours of September 27th, we were awakened by a flood of messages. What should have been a great celebration degenerated into bizarre drama. A Suryoye wedding celebration was held at a large party center in Baghdede. During the newlyweds' first dance, the ceiling of the ballroom caught fire. Within seconds, the hall turned into an inferno. The speed with which the fire spread meant that many were unable to escape unharmed. The death toll rose to 117, and more than 200 were injured.

Burns are a specialty, requiring special medications and treatments. Regional hospitals have a basic supply of these medications, but they were not prepared for a need of this magnitude. Within hours, SANI's European partners had set up a crowdfunding campaign, and soon specific medicines and supplies were on their way to the Nineveh Plains.

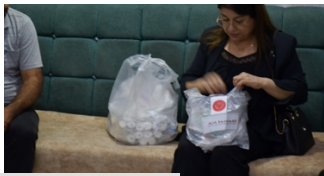


To our great sorrow, SANI received the news that among the victims were 3 participants of the recent Art Therapy groups. This news made "far away" seem very close for a moment.



Fortunately, many of the injured have been able to leave the hospital after some time. The Beth Nahrain Organization for Women (BNOW) visits them regularly with medicine and bandages, but more importantly, to monitor their mental health. Many

have lost family members in the fire and need to focus on their own recovery as well as their grieving process. SANI will continue to facilitate these regular visits in 2024.



100 families received medicine and bandages for burns

Stopping the exodus of Christians from Iraq is one of SANI's primary goals. Emergency relief, shelter, education, vocational training, psychosocial support, and other critical projects have been meeting the most urgent needs. The most practical way to rebuild the lives of displaced and returning Christian communities affected by the brutal invasion of ISIS in 2014 is through the creation of livelihood businesses. Christians in the Nineveh Plain are under tremendous pressure. The most practical way to rebuild their lives is through the creation of small and medium-sized businesses that will help alleviate poverty and, in turn, make the returning Christian minorities self-sufficient.

Since 2019, the Beth Nahrain Organization for Women (BNOW) has been helping people with specific knowledge, experience, skills, and motivation to strengthen their



businesses have been completed in Baghdede, Bartella, Karamles, Alqosh, Bashika, and Sinjar. To date BNOW has completed over 80 businesses. Some of the newly operational livelihood businesses include Mini Market, Nail salon, Stationery and



printing business, Cafe & Juicy bar, Laundry business, Beauty salon, Catering business, Grill restaurant, Dentist, Nuts & Sweets business, Poultry business, Maintenance fault diagnosis business, Sewing atelier and Cooling business.

The small businesses not only provide income for the owners and their families. Many businesses have already been able to hire employees.

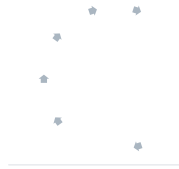


These small businesses are also vital to the local economy. A livable city must be well-equipped and provide a variety of business types.



80 livelihood businesses
500+ direct beneficiaries

New Bibles with old words, the familiarity and security of being a Christian in one's own home. This gives the confidence that people so desperately need after all the misery, loss, flight, return and reconstruction. Especially for Aramaic speakers in the homelands it is important to keep expressing themselves in the language that was also spoken by Jesus and his Apostles.



A linguistic evolution that began with the departure of the forefather Abraham from Ur of the Chaldees and that will now, for the first time, be printed for his distant descendants.



This is why it is all the more significant that in this project 10,000 Bibles have been distributed to 10,000 families, in the everyday Eastern-Aramaic dialect they understand, as it has evolved over the centuries.

Close cooperation with the Chaldean Catholic Church and the Assyrian Church was essential to the implementation of this project.

Based on statistical data on the average family composition of Christian families in the region, it is estimated that 10,000 Family Bibles represent the equivalent of 50,000-80,000 people who will be reached by the Word read or spoken in the privacy of their own homes.

First ever printed Bible in Eastern-Aramaic:
10,000 Bibles
10,000 families

Another project aimed at preserving and promoting the Aramaic language is the establishment of a dubbing studio in Ainkawa/Erbil in northern Iraq. The dubbing studio Bahro started its activities in July 2022.

With the establishment of Bahro Studio, SANI has been able to strengthen the unique ethno-religious culture of Aramaic-speaking Christians through Aramaic broadcasting throughout the Middle East. By translating programs from Arabic or English into Aramaic (Eastern and Western dialects), it has made a significant contribution to increasing knowledge of the Aramaic language, culture and customs.

By offering productions in Aramaic, the preservation of the language has come a step closer. People will be more encouraged to continue using their mother tongue at home,

and the ease of speaking will visibly increase. A language also gives an individual a piece of identity and self-esteem.



In 2023, Bahro Studio provided services to 2 documentaries, one of which had 25 episodes and the other 20. For 4 social and cultural programs with 237 episodes, video and sound editing was provided.

Bahro Studio has produced commercials for private companies and schools. In addition, Bahro Studio has done productions related to humanitarian aid and relief projects. A total of 34 videos were dubbed, including interviews with victims of the earthquake in Aleppo/Syria, which were subtitled in English.

Bahro Studio works closely with TV stations whose platforms provide an outreach to millions of viewers.

Billions of viewers across TV platforms:
over 1 million and many times that number

Children

While SANI always has an eye for children's interests in its projects, there is one feast in the year that is really highlighted.

The Suryoye celebrate Christmas together in church. That this is still freely possible in the homelands is something to be thankful for.

Christmas is also a time of giving and togetherness. SANI would like to contribute to this. With the help of the Suryoye in the Diaspora, every year before Christmas there is a joyful celebration for children who live in tense situations every day. This year



a special Christmas celebration will be held in the areas affected by the earthquake. A day of carefree fun, eating together and receiving a gift. A once-in-a-year feast!



000 Christmas gifts distributed in 2023

Since 2019 until today, the project of godparenthood continues on an ongoing basis. Children whose parents or one of their parents died during the war and children from needy families are proposed for support in the form of a sponsorship.

Children in Syria have a godparent (godmother/godfather) who pays a certain amount each month. In addition, there is always the possibility of exchanging information between the child and the sponsor.

So far, more than 100 Syrian children in Europe have received godparenthood. In 2023, 25 children have found a godparent.

These projects and this report have been made possible in part by the cooperation of our loyal donors, to whom we express our gratitude.



Syriac Cross Organization for Relief and Development

Syria, al-Malikiyah, Zuhor 2 Street, Tishreen

info@syriaccross.com

Syriac Women Union (SWU)

Syria, al-Qamishli, Chaldean Church Street, Gas station roundabout

Eisaelham678@gmail.com

Olaf Taw

Syria, Qamishli, Almouazafin, Miami Street

Olaftaw.mdabronutho@gmail.com

Beth Nahrain Organization for Women (BNOW)

Hayi Aqad 1/878, Teologi Street G775

Bakhdida, Ninawa province, Iraq

hnhb_niniweh@yahoo.com

Bahro Studio

Iraq, Erbil – Ainkawa, Hayi Mart Shmuni Street 245/4/216

bahro.studio.iraq@gmail.com

Süryani Dernekler Federasyonu (SÜDEF)

Akçakaya mahallesi, Cumhuriyet caddesi no 40

47510 Midyat/Mardin/Türkiye

suryani.federasyon@hotmail.com

Syriac Youth Union (SYU),

Sed El Bouchrieh Electricity establishment Street

Yazbek and Madi property – 2nd floor, district of Metn

Lebanon, Beirut

info@syriac-union.org

SCHlomo for Relief and Development

Tobelwiesstrasse 29, 8309 Nürens Dorf, Switzerland

info@schlomo.info

Syriac Cross e.V.

Rehstieg 116, 21147 Hamburg, Germany

info@syriaccross.com

Stichting Schlomo

Antillenstraat 24a

7556 AV Hengelo, The Netherlands

info@schlomo.nl